

CURVED MODULAR CHAINS

The background of the page is a close-up photograph of white, curved modular chains. The chains are composed of interlocking plastic links with small metal pins. The perspective is from above, showing the repeating pattern of the links. The lighting is bright, creating soft shadows and highlights on the plastic surfaces.

# Curved modular chains

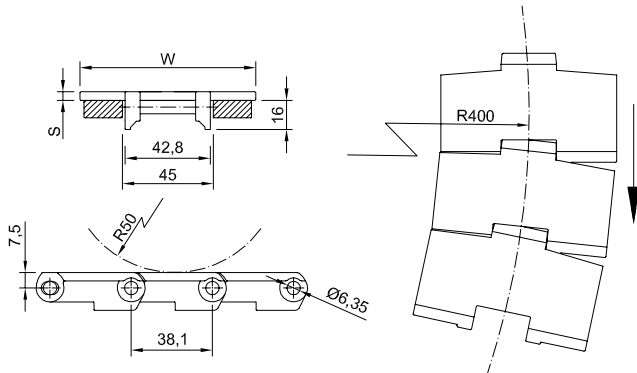
**Standard material:** POM LF

Delrin Kevlar® material available on request

**Pin Material:** Stainless Steel AISI 304

**Standard delivery length:** 80 steps = 3048 mm

Code	Width		Radius of curvature [mm]	Table thickness [mm]	Admissible load [N]	Weight [kg/m]
	[mm]	[inch]				
NCMD880K325-LF	82,5	3,25	400	4,0	2000	0,9
NCMD880K400-LF	101,6	4,00	400	4,0	2000	1,0
NCMD880K450-LF	114,3	4,50	400	4,0	2000	1,1
NCMD879K600-LF	152,4	6,00	400	4,8	2200	1,3
NCMD879K750-LF	190,5	7,50	400	4,8	2200	1,5



Part number

NCMD 880 K325 -LF

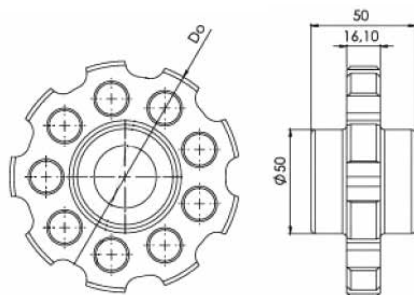
Type

Pitch

Width in inches x 100

Low friction

## Sprockets for NCMD880 and NCMD879 chains



Part number

NSMD880 - R 20 Z11

Type

Bore type: R = round / Q = square

Bore dimension (mm)

Teeth nr.

Teeth nr.	Dp [mm]	Do [mm]	S [mm]	Ø round + set-screw UNI
9	111,4	110	59,3	20-25-30
11	135,2	135	71,2	20-25-30

Standard material: nylon PA6 fiberglass.

It is possible to supply sprocket with any number of teeth or any material by CNC machining

Dp = Pitch diameter

Do = External tooth diameter

# NCMD880TAB - NCMD879TAB

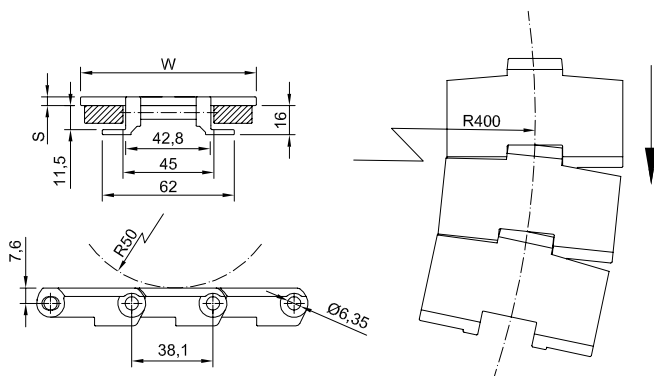
**Standard material:** POM LF

Delrin Kevlar® material available on request

**Pin Material:** Stainless Steel AISI 304

**Standard delivery length:** 80 steps = 3048 mm

Code	Width		Radius of curvature [mm]	Table thickness [mm]	Admissible load [N]	Weight [kg/m]
	[mm]	[inch]				
NCMD880K325-TAB	82,5	3,25	400	4,0	2000	0,95
NCMD880K400-TAB	101,6	4,00	400	4,0	2000	1,05
NCMD880K450-TAB	114,3	4,50	400	4,0	2000	1,15
NCMD879K600-TAB	152,4	6,00	400	4,8	2200	1,35
NCMD879K750-TAB	190,5	7,50	400	4,8	2200	1,55



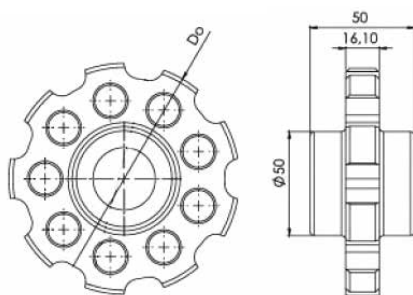
**Part number** NCMD880 K325 -TAB

Dimension \_\_\_\_\_

Width in inches x 100 \_\_\_\_\_

TAB execution \_\_\_\_\_

## Sprockets for NCMD880TAB and NCMD879TAB chains



**Part number** NSMD880 - R 20 Z11

Type \_\_\_\_\_

Bore type: R = round / Q = square \_\_\_\_\_

Bore dimension (mm) \_\_\_\_\_

Teeth nr. \_\_\_\_\_

Teeth nr.	Dp [mm]	Do [mm]	Available standard bore	
			Square [mm]	Ø round + set-screw UNI
9	111,4	110	40x40	20-25-30
11	135,2	135	40x40	20-25-30

Standard material: nylon PA6 fiberglass.  
 It is possible to supply sprocket with any number of teeth or any material by CNC machining  
 Dp = Pitch diameter  
 Do = External tooth diameter

**Standard material:** POM LF

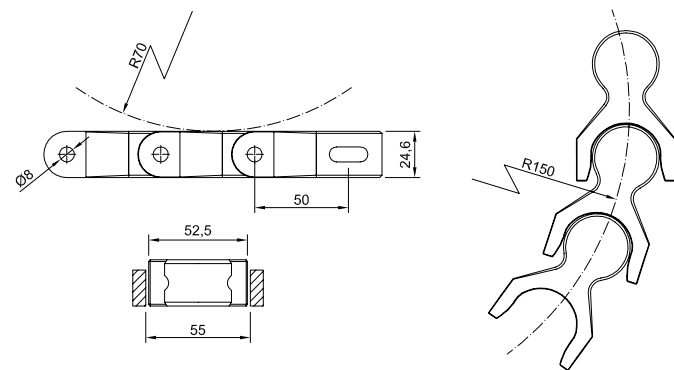
Delrin Kevlar® material available on request

**Pin Material:** Stainless Steel AISI 304

**Standard sprockets:** 8, 10 teeth

**Width:** 55 mm

Code	Pitch [mm]	Width		Radius of curvature [mm]	Admissible load [N]	Weight [kg/m]
		[mm]	[inch]			
NCMD1701-R	50	52,5	2,05	150	2550	1,58

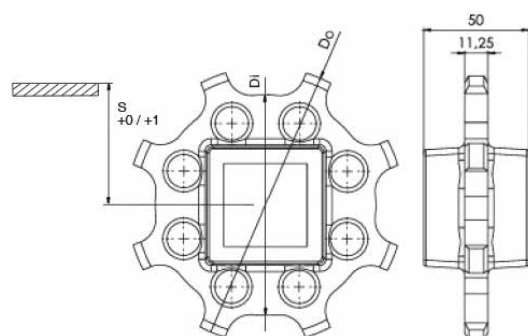


<b>Part number</b>	NCMD 1701-R
Type	
Pitch	

### Sprockets for NCMD1701 chain



<b>Part number</b>	NSMD1701 - R 20 Z10
Type	
Bore type: R = round / Q = square	
Bore dimension (mm)	
Teeth nr.	



Teeth nr.	Di [mm]	Do [mm]	S [mm]	Available standard bore	
				Square [mm]	Ø round + set-screw UNI
8	106,8	136	53	40x40	25-30
10	136,8	165	69	40x40	25-30

Standard material: nylon PA6 fiberglass.

It is possible to supply sprocket with any number of teeth or any material by CNC machining

$D_p$  = Pitch diameter

$D_o$  = External tooth diameter

# NCMD1701TAB-R

**Standard material:** POM LF

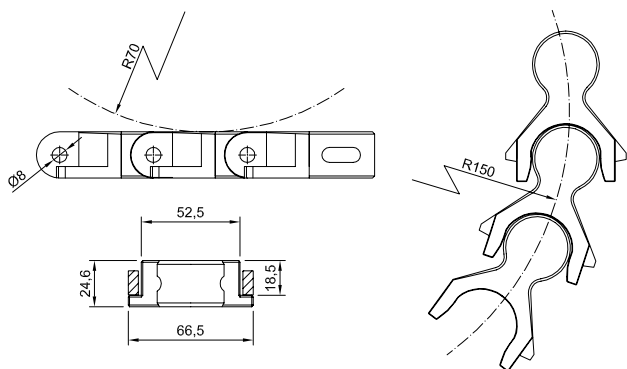
Delrin Kevlar® material available on request

**Pin Material:** Stainless Steel AISI 304

**Standard sprockets:** 8, 10 teeth

**Width with TAB:** 66,5 mm

Code	Pitch [mm]	Width		Radius of curvature [mm]	Admissible load [N]	Weight [kg/m]
		[mm]	[inch]			
NCMD1701TAB-R	50	52,5	2,05	150	2550	1,65

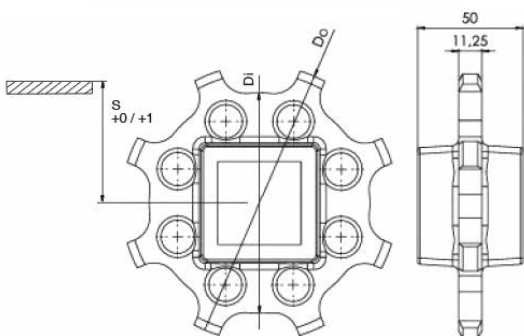


<b>Part number</b>	<b>NCMD 1701-TAB-R</b>
Type	
Dimension - TAB execution	

## Sprockets for NCMD1701 chain



<b>Part number</b>	<b>NSMD1701 - R 20 Z10</b>
Type	
Bore type: R = round / Q = square	
Bore dimension (mm)	
Teeth nr.	



Teeth nr.	Di [mm]	Do [mm]	S [mm]	Available standard bore	
				Square [mm]	Ø round + set-screw UNI
8	106,8	136	53	40x40	25-30
10	136,8	165	69	40x40	25-30

Standard material: nylon PA6 fiberglass.  
 It is possible to supply sprocket with any number of teeth or any material by CNC machining  
 Dp = Pitch diameter  
 Do = External tooth diameter

**CURVED MODULAR CHAINS**

**Standard material:** POM LF

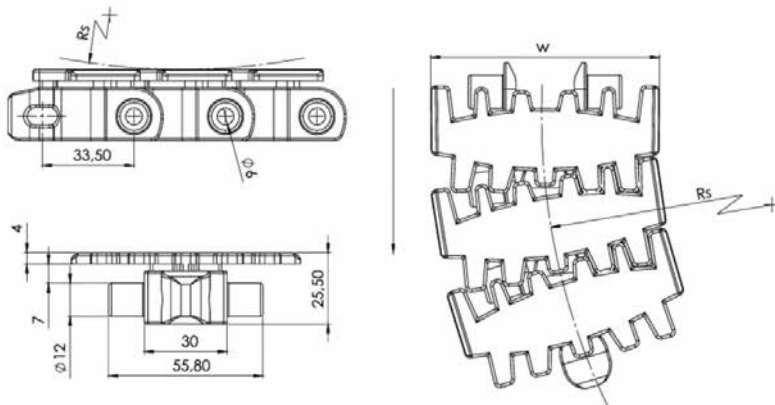
Delrin Kevlar® material available on request

**Pitch:** 33,5 mm

**Pin Material:** Stainless Steel AISI 304

**Standard sprockets:** 12 teeth

Code	Width		Radius of curvature [mm]	Table thickness [mm]	Admissible load [N]	Weight [kg/m]
	[mm]	[inch]				
NCFLEXI-LF	82,5	3,25	140	4	1100	1,25
	114,3	4,50	160	4	1100	1,55



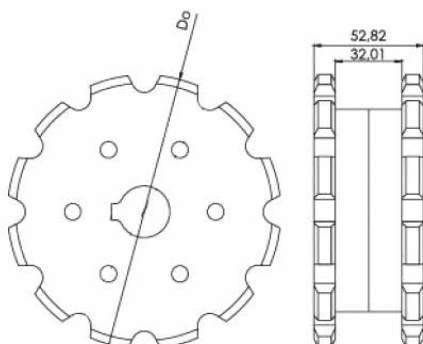
**Part number** **NCFLEXI -K325 -LF**

Type \_\_\_\_\_

Width in inches x 100 \_\_\_\_\_

Materiale: POM LF \_\_\_\_\_

## Sprockets for FLEXI chain



**Part number** **NSFLEXI - R 20 Z12**

Type \_\_\_\_\_

Bore type: R = round / Q = square \_\_\_\_\_

Bore dimension (mm) \_\_\_\_\_

Teeth nr. \_\_\_\_\_

Teeth nr.	Dp [mm]	Do [mm]	Available standard bore	
			Square [mm]	Ø round + set-screw UNI
12	131	133	40x40	25-30

Standard material: nylon PA6 fiberglass.  
 It is possible to supply sprocket with any number of teeth or any material by CNC machining  
 Dp = Pitch diameter  
 Do = External tooth diameter