

STRAIGHT MODULAR CHAINS



DRIVE
SOLUTIONS

The background of the page is a vertical strip of images showing different types of modular chains. At the top, there are grey metal links. Below that, there are white plastic links with circular pins. At the bottom, there are blue plastic links with a more complex, interlocking design.

**Straight
modular chains**

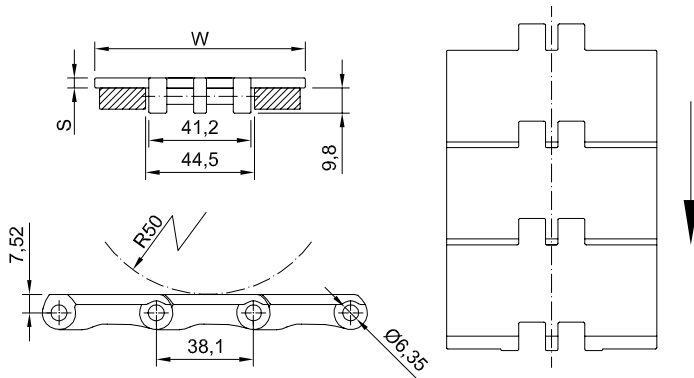
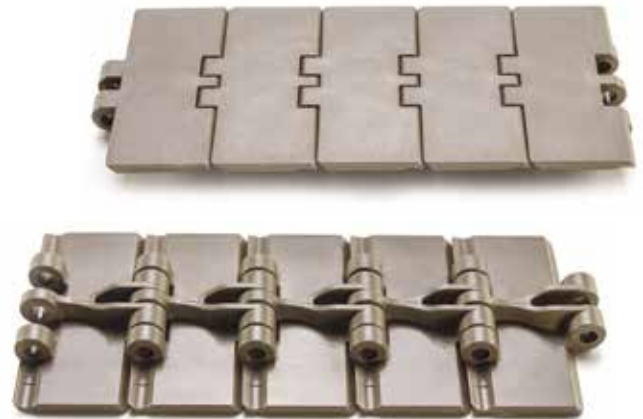
Standard material: POM LF

Delrin Kevlar® material available on request

Pin Material: Stainless Steel AISI 304

Standard delivery length: 80 steps = 3048 mm

Code	Width		Table thickness [mm]	Admissible load [N]	Weight [kg/m]
	[mm]	[inch]			
NCMD820K325-LF	82,5	3,25	4	1400	0,84
NCMD820K400-LF	101,6	4,00	4	1400	0,95
NCMD820K450-LF	114,3	4,50	4	1400	1,05
NCMD820K600-LF	152,4	6,00	4,8	1400	1,30
NCMD820K750-LF	190,5	7,50	4,8	1400	1,55



Part number NCMD 820 K325 -LF

Type _____

Pitch _____

Width in inches x 100 _____

Low friction _____

Sprockets for NCMD820 chain



Part number NSMD820 -R 25 K -Z21

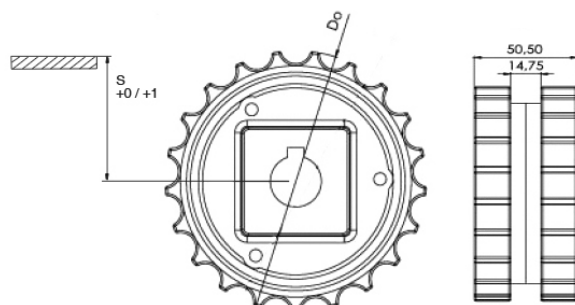
Type _____

Bore type: R = round / Q = square _____

Bore dimension (mm) _____

K = with set-screw _____

Teeth nr. _____

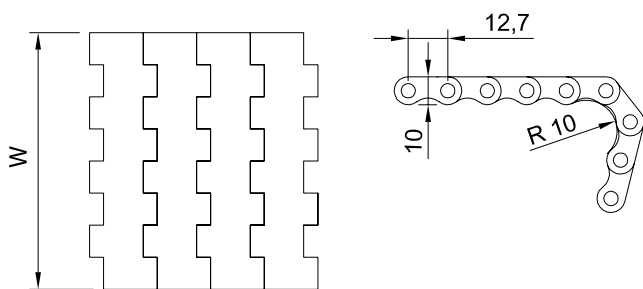


Teeth nr.	Dp [mm]	Do [mm]	S [mm]	Ø round + set-screw UNI
21	129,3	129	67,8	25-30
23	141,2	142	74,8	25-30
25	153,2	154	79,8	25-30

Standard material: nylon PA6 fiberglass.
 It is possible to supply sprocket with any number of teeth or any material by CNC machining
 Dp = Pitch diameter
 Do = External tooth diameter

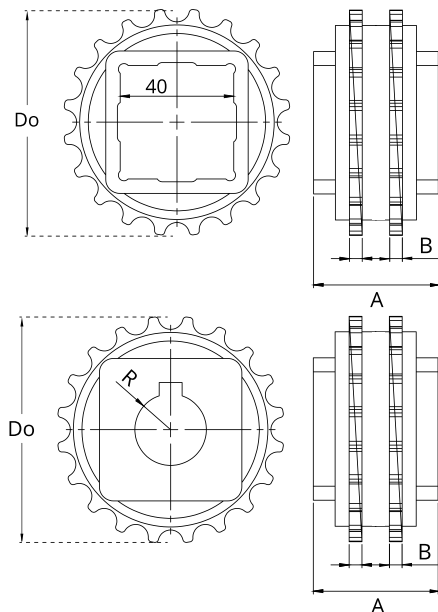
NCEC127C

- Standard material:** POM LF
- Belt type:** closed flat top surface
- Pitch:** 12,7 mm (1/2")
- Nose bar Ø:** 20 mm
- Width:** 50 - 83 - 100 - 150 mm
- Standard sprockets:** 19 - 24 - 28 - 30 - 36 teeth



Part number	NCEC	127	C	-B	-83
Type					
Pitch					
Closed flat top surface					
Belt color: B = blue / N = marrone					
Width in mm					

Sprockets for NCEC127 type

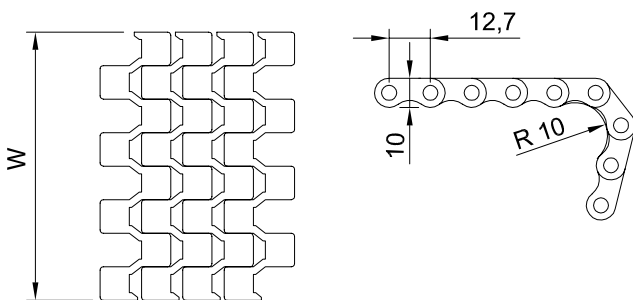
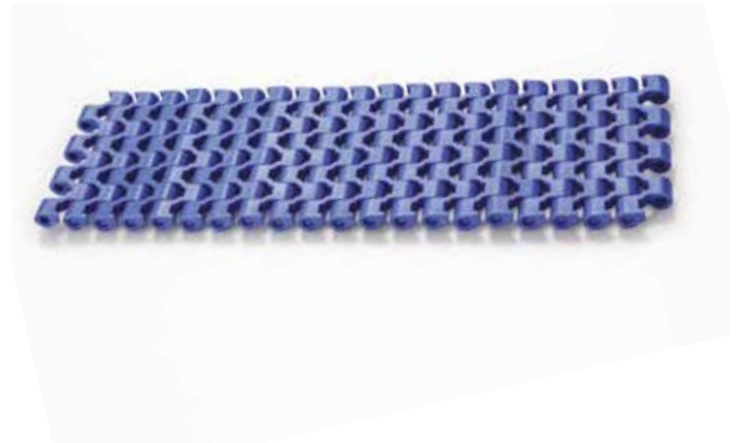


Part number	NSEC127	-R	20	K	-Z24
Type					
Bore type: R = round / Q = square					
Bore dimension (mm)					
K = with set-screw					
Teeth nr.					

Teeth nr.	Dp [mm]	Do [mm]	A [mm]	B [mm]	Available standard bore	
					Square [mm]	Ø round + set-screw UNI
19	77,3	78,1	40	3,5	40x40	20 - 25 - 30
24	97,6	99,0	40	3,5	40x40	20 - 25 - 30
28	113,9	115,3	40	3,5	40x40	25 - 30
30	122,0	123,4	40	3,5	40x40	25 - 30
36	146,4	147,9	40	3,5	40x40	25 - 30

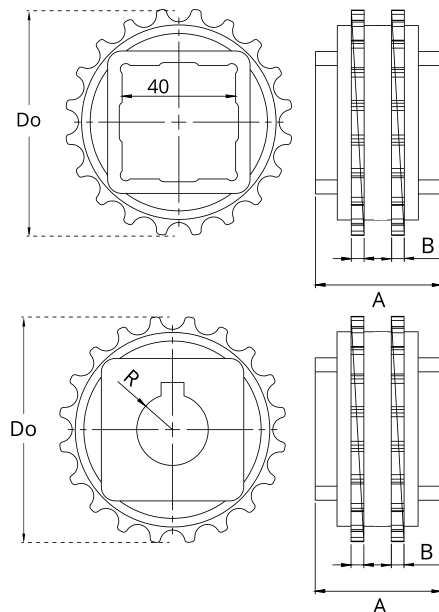
Standard material: nylon PA6 fiberglass.
 It is possible to supply sprocket with any number of teeth or any material by CNC machining
 Dp = Pitch diameter
 Do = External tooth diameter

Standard material: POM LF
Belt type: open flat surface flush grid
Pitch: 12,7 mm (1/2")
Nose bar Ø: 20 mm
Width: 50 - 83 - 100 - 150 mm
Standard sprockets: 19 - 24 - 28 - 30 - 36 teeth



Part number	NCEC	127	FG	-B	-83
Type					
Pitch					
Open flat surface flush grid					
Belt color: B = blue / N = brown					
Width in mm					

Sprockets for NCEC127 type



Part number	NSEC127	-R	20	K	-Z24
Type					
Bore type: R = round / Q = square					
Bore dimension (mm)					
K = with set-screw					
Teeth nr.					

Teeth nr.	Dp [mm]	Do [mm]	A [mm]	B [mm]	Available standard bore	
					Square [mm]	Ø round + set-screw UNI
19	77,3	78,1	40	3,5	40x40	20 - 25 - 30
24	97,6	99,0	40	3,5	40x40	20 - 25 - 30
28	113,9	115,3	40	3,5	40x40	25 - 30
30	122,0	123,4	40	3,5	40x40	25 - 30
36	146,4	147,9	40	3,5	40x40	25 - 30

Standard material: nylon PA6 fiberglass.
 It is possible to supply sprocket with any number of teeth or any material by CNC machining
 Dp = Pitch diameter
 Do = External tooth diameter

NCMD254C

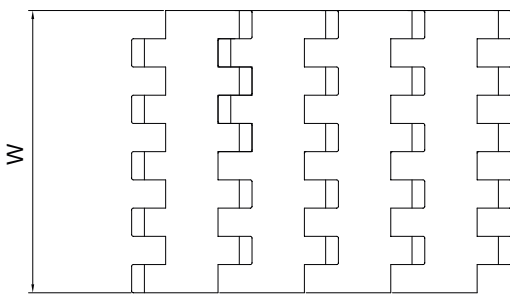
Standard material: POM

Belt type: open flat surface flush grid

Pitch: 25,4 mm (1")

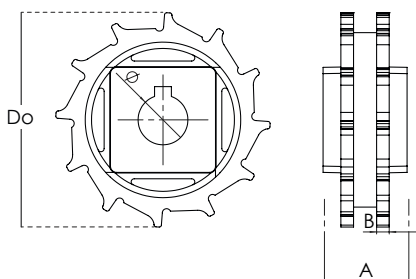
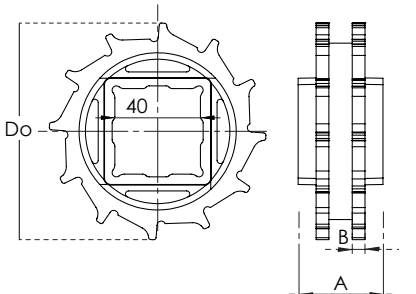
Width: 100 - 150 - 200 mm

Standard sprocket: 8, 10, 12, 15, 18 teeth



Part number	NCMD	254	C	-B	-100
Type					
Pitch					
Closed flat top surface					
Belt color: B = blue / W = white					
Width in mm					

Sprockets for NCMD254 type



Part number	NSMD254	-R	25	K	-Z10
Type					
Bore type: R = round / Q = square					
Bore dimension (mm)					
K = with set-screw					
Teeth nr.					

Teeth nr.	Dp [mm]	Do [mm]	A [mm]	B [mm]	Available standard bore	
					Square [mm]	Ø round + set-screw UNI
8	68,4	67,7	30	6	25x25	25
10	82,8	85,0	30	6	40x40	25 - 30
12	98,9	102,0	30	6	40x40	25 - 30
15	123,1	126,0	30	6,0	40x40	25 - 30
18	147,4	152,0	30	6	40x40	25 - 30

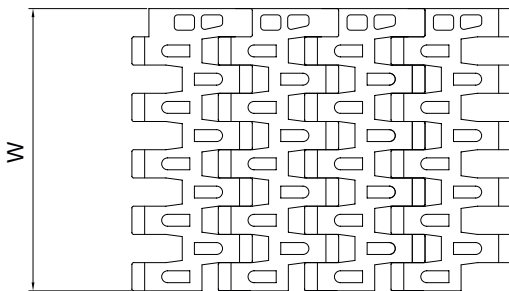
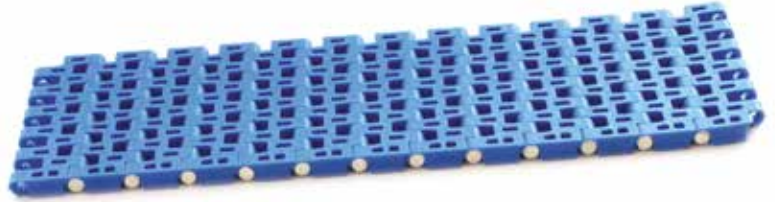
Standard material: nylon PA6 fiberglass.

It is possible to supply sprocket with any number of teeth or any material by CNC machining

Dp = Pitch diameter

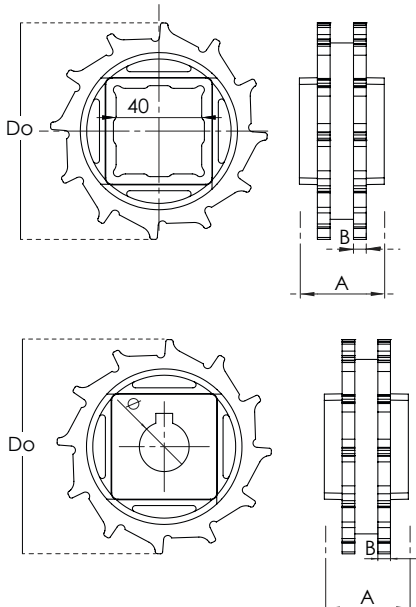
Do = External tooth diameter

Standard material: POM
Belt type: open flat surface flush grid
Pitch: 25,4 mm (1")
Width: 100 - 150 - 200 mm
Standard sprocket: 8, 10, 12, 15, 18 teeth



Part number	NCMD	100	FG	-B	-100
Type					
Pitch					
Superficie aperta flush grid					
Belt color: B = blue / W = white					
Width in mm					

Sprockets for NCMD254 type



Part number	NSMD254	-R	25	K	-Z10
Type					
Bore type: R = round / Q = square					
Bore dimension (mm)					
K = with set-screw					
Teeth nr.					

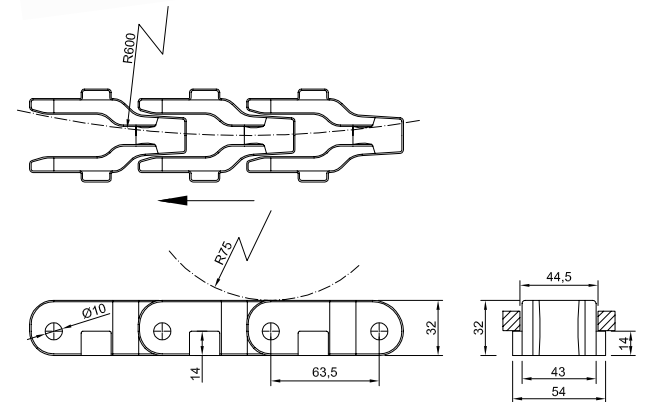
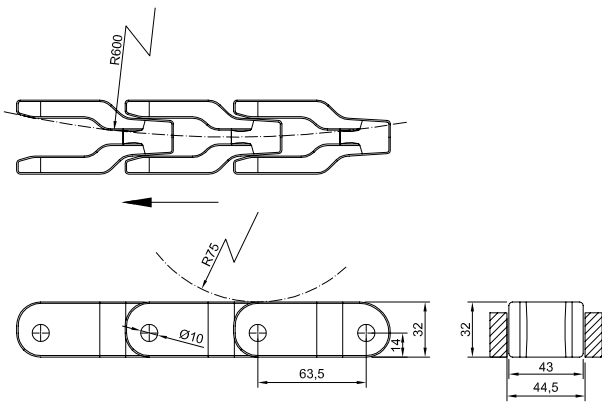
Teeth nr.	Dp [mm]	Do [mm]	A [mm]	B [mm]	Available standard bore	
					Square [mm]	Ø round + set-screw UNI
8	68,4	67,7	30	6	25x25	25
10	82,8	85,0	30	6	40x40	25 - 30
12	98,9	102,0	30	6	40x40	25 - 30
15	123,1	126,0	30	6	40x40	25 - 30
18	147,4	152,0	30	6	40x40	25 - 30

Standard material: nylon PA6 fiberglass.
 It is possible to supply sprocket with any number of teeth or any material by CNC machining
 Dp = Pitch diameter
 Do = External tooth diameter

NCMD600-S - NCMD600TAB-S

Standard material: POM LF
Pin Material: Stainless Steel AISI 304
Pignoni standard: 8, 40 teeth
Width con TAB: 54 mm
Spessore della catena: 32 mm

Code	Pitch [mm]	Width		Admissible load [N]	Weight [kg/m]
		[mm]	[inch]		
NCMD600-S	63,5	43,0	1,70	400	1,55
NCMD600TAB-S	63,5	43,0	1,70	400	1,65



Part number NCMD 600-S

Type _____

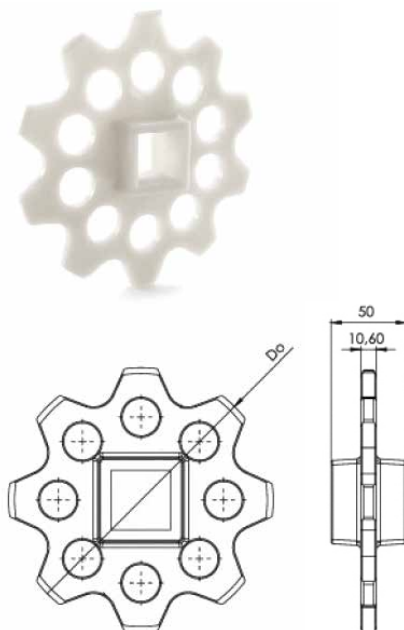
Dimension _____

Part number NCMD 600TAB-S

Type _____

Dimension - TAB execution _____

Sprockets for NCMD600 type



Part number NSMD600 -R 25 K -Z10

Type _____

Bore type: R = round / Q = square _____

Bore dimension (mm) _____

K = with set-screw _____

Teeth nr. _____

Teeth nr.	Dp [mm]	Do [mm]	Available standard bore	
			Square [mm]	Ø round + set-screw UNI
8	166	172	40x40	25-30
10	205	215	40x40	25-30

Standard material: nylon PA6 fiberglass.
 It is possible to supply sprocket with any number of teeth or any material by CNC machining
 Dp = Pitch diameter
 Do = External tooth diameter

STRAIGHT MODULAR CHAINS